

Partnership for the Enhancement of Regional Preparedness (PERP)

VOLUME 1 ISSUE 2

OCTOBER 2010

INSIDE THIS ISSUE:

Region 2
Healthcare
Hazard GIS
Maps 2

Regional
Hazard
Vulnerability
Analysis 2

“In the
Coming
Months” 2

Grant
Overview 3

Executive
Committee
Contact List 3



Dear PERP Partner,



Thank you for your continued support and interest in the PERP Grant. The program has made significant progress over the past several months toward developing and implementing plans, procedures and protocols on managing the flow of information and responding to health and medical challenges presented by disasters and emergency situations. In June, committee members attended a day long education and training exercise on the newly developed Region II Healthcare Mutual Aid Plan (HMAP) for Evacuation and Resources/Assets to test the protocols and Mutual Aid Agreement established through this plan. The Regional Medical Coordination Center (RMCC) planning

is continuing as anticipated with an expected completion of Spring 2011. A detailed update will be provided at the November 30th Stakeholder Meeting. The committee has facilitated the creation of several planning resources including Healthcare Hazard GIS maps and a regional multi-disciplinary hazard and vulnerability assessment (HVA). These tools are available to any healthcare or public health agency. Additionally, PERP, working with the Metropolitan Medical Re-



sponse System (MMRS) and through Massachusetts Senior Care Association, opened the doors for all long term care (LTC) facilities in the region to be members of MassMAP, Massachusetts LTC Mutual Aid Plan. The committee continues to brainstorm for future endeavors and welcomes input from regional stakeholders. We encourage you to visit the PERP webpage or contact an executive committee member for more info on how to become involved in the planning process. Stay tuned for upcoming initiatives and events.

Sincerely,

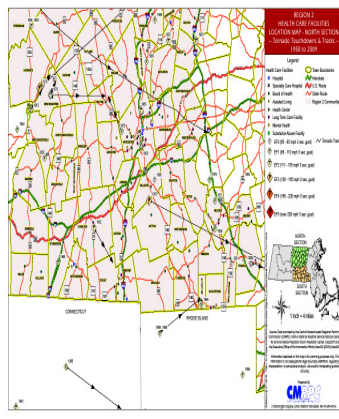
Regional Medical Coordination Center (RMCC)

The RMCC was conceptualized several years ago to more efficiently and effectively coordinate the movement of medical surge patients, resources, and staff during a large emergency or disaster. Moreover, the RMCC in concert with MassMAP and HMAP will manage the flow of information during a regional/local event. The RMCC exists physically and conceptually with pieces of the planning complete. In spite of ongoing planning, the RMCC plans are not yet finalized. Therefore, the PERP executive committee selected an outside consultant to assess the capabilities of the region, conduct a gap analysis of the resources already in place and finalize the RMCC. Customization and finalization of the job action sheets, standardized reporting forms,

RMCC “customizable” scripts for communication with region II facilities, ICS documents for logging the incident, ICS position boards and trainings and exercises will be developed. The training and exercise portion will occur in 2 phases. The first phase will include training on operations of the RMCC and communications / reporting structure when operating in conjunction with the State ESF 8 Desk or Local EOC. The second phase will include a functional exercise utilizing both the RMCC and numerous facilities throughout the region to test communication. PERP has participated in the development of mutual aid agreements for both long term care facilities and hospitals. When the RMCC plans are complete, the PERP executive com-

mittee anticipates expanding the mutual aid planning to other medical disciplines, e.g. specialty care hospitals and home health. Although the RMCC is a component of HMAP, it is an asset to be used by all health and medical organizations. These agreements allow for planning and preparedness activities across disciplines and further enhance the health and medical response capabilities of the region. The RMCC, MassMAP and HMAP plans will work synergistically during a regional health or medical event to best manage the flow of information and response. This collaboration not only meets grant deliverables but is the essence of a partnership grant.

Healthcare Hazard GIS Maps Available



Southern Region II
Tornado Map.

Save the Date

Region II Health & Medical Stakeholder Meeting will be held on November 30, 2010. All are welcome. Please see "In the Coming Months" article for further details.

Be A Volunteer!

Join the **Worcester Regional
Medical Reserve Corp.**

For information on the WRMRC
and how to apply please visit
their website:

www.worcesterregionalmrc.org

PERP, in collaboration with the Central MA Regional Planning Commission, created several geographic information system (GIS) maps of Region II. The intent of these maps is to be a resource tool used for both planning and response purposes. The data provided is intended to assist during an organizations hazard vulnerability assessment and also enhance cross disciplinary preparedness. Several potential hazards that the region is at

risk for were identified and then mapped based on historical data. The potential hazards currently identified include tornados, earthquakes, dams, hurricanes and flooding; however, if more hazards are identified they can be mapped as well. In addition to plotting hazard data, major roadways and waterways were also plotted along with the location of every hospital, health center, long term care facility and specialty care hospital in the

region. All maps are posted on the PERP grant webpage and available to anyone who is interested. These maps will be a valuable resource for future planning and preparedness initiatives on both the local level and regional level. Please visit the webpage or contact the PERP grant coordinator for additional information.

2010 Region II HVA Completed

A regional hazard vulnerability assessment (HVA) has been conducted and approved by the PERP executive committee. An HVA is a process used to identify both man-made and natural hazards and the effect these hazards may have on a specific organization or community. An HVA is a valuable planning tool that serves as a guide when creating and updating emergency preparedness

procedures. The Region II HVA compiled data from numerous hospitals, health centers, long term care facilities, home health agencies and specialty care hospitals to develop an HVA representative of the region. HVA submission from facilities was minimal this past year. Please submit your HVA to the grant coordinator in order to be represented in this important document. All

individual organization information is kept private and only viewed by the grant coordinator. Increased participation will ensure full representation of the region. This HVA will be updated and available to the region on a yearly basis. Please visit the PERP grant webpage or contact the grant coordinator with any questions.

In the Coming Months...

PERP will continue to collaborate with both the Healthcare Mutual Aid Plan (HMAP) and long term care mutual aid plan (MassMAP) to ensure that the work done on the RMCC in the coming months complements and collaborates with both plans in a seamless fashion. A full-scale exercise encompassing HMAP, RMCC and MassMAP is envisioned by all three planning committees as a

goal for the future. In addition, the Region II Mass Casualty Incident (MCI) Committee is in the process of developing a regional MCI plan. PERP envisions playing an active role in the planning process as both a resource and potential funder for the project. The MCI plan will work in unison with both HMAP, RMCC and MassMAP to further enhance preparedness capabilities here in Region

II. Please join us on November 30, 2010 for a Region II Health and & Medical stakeholder meeting at the Hoagland Pincus Conference Center in Shrewsbury MA. The meeting will run from 9 am — 11 am. A light breakfast will be served. Invitations will be sent out shortly.



MA Emergency Preparedness Region II

Colleen Turpin—Grant Coordinator
City of Worcester, Division of Public Health
25 Meade Street
Worcester, MA 01610
Phone: 508-579-9769
Fax: 508-799-8489
E-mail: turpinc@worcesterma.gov
Webpage: <http://cmemsc.org/PERP/>

Central MA Region II was awarded a emergency preparedness partnership grant from the Massachusetts Department of Public Health, Emergency Preparedness Bureau in January 2009. This grant, known as the PERP grant, is designed to enhance regional collective capacity to share resources and respond to public health and medical threats and emergencies throughout the region. PERP is governed by a ten person executive committee representing ten diverse health and medical disciplines including public health, the metropolitan medical response system (MMRS), local hospitals, an ACS level I trauma center, local physicians, EMS, specialty care hospitals, long term care facilities, health centers and home health agencies. The executive committee welcomes participation and input from all stakeholders throughout the region. Please contact the grant coordinator or an executive committee member for more information.

We Value Your Input!

Provided is contact information for all ten executive committee members. Please feel free to contact a committee member or the grant coordinator with any questions or concerns you may have. In order for our work to be most effective, we welcome and value any and all input you may have.

- Beverly Salate—VNA Carenetwork
bsalate@vnacarenetwork.org 978-537-2322
- Christopher Montiverdi—Metropolitan Medical Response System
montiverdic@worcesterma.gov 508-799-8564
- Donna Auger- Milford Regional Medical Center
dauger@milreg.org 508-422-2247
- Edward McNamara—Central MA EMS Corp
emacnamara@cmemsc.org 508-854-0111
- Eric Lane - Great Brook Valley Health Center
Eric_Lane@greatbrook.org 978-549-3315
- Gina Smith—UMass Memorial Medical Center
smithg02@ummc.org 508-334-7688
- Lynn Keeley—Whittier Rehabilitation Hospital
lkeeley@whittierhealth.com 508-871-2116
- Margaret Leoni—MA Senior Care Association
mleoni@masenioncare.org 617-558-0202
- Paula Madison—Worcester District Medical Society
pjmwynd@aol.com 508-829-7229
- Seth Peters—Worcester Division of Public Health
peterss@worcesterma.gov 508-799-1763

**We Look Forward to Seeing You
and Receiving your input on
November 30th at our Annual
Stakeholder Meeting!**